

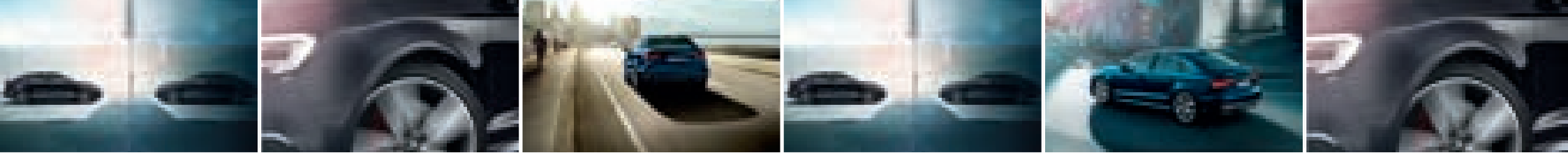


A3

Audi A3 and S3 Sedan

Price and options list November 2016

Audi 
Vorsprung durch Technik



Power, Torque and Prices

Model:		kW/rpm	Nm/rpm	Fuel Consumption/100 km			CO ₂ Emissions g/km	0-100 km/h sec	Top speed km/h	RRP* (all inclusive)
				Urban	Extra urban	Combined				
A3 Sedan T FSI										
1.0 T FSI	Manual	85/5000-5500	200/2000-3500	5.6	3.9	4.5	105	9.9	211	408 500
1.0 T FSI	S tronic	85/5000-5500	200/2000-3501	5.4	4.0	4.5	106	9.9	211	427 000
1.4T FSI	Manual	110/5000-6000	250/1500-3500	5.8	4.0	4.7	108	8.2	224	429 500
1.4T FSI	S tronic	110/5000-6000	250/1500-3501	5.9	4.1	4.8	111	8.2	224	448 000
2.0T FSI	Manual	140/4200-6000	320/1500-4200	7.4	4.5	5.6	127	6.9	250	447 000
2.0T FSI	S tronic	140/4200-6000	320/1500-4201	7.2	4.7	5.6	127	6.8	250	465 500
A3 Sedan										
S3 quattro	S tronic	228/5500-6500	400/2000-5400	8.2	5.4	6.4	148	4.6	250	656 000

Fuel consumption and CO₂ data applies to the German Market. The specified values are determined in accordance with certain test procedures. The specifications do not refer to an individual vehicle but serve only as a basis for comparing the different types of vehicles. In addition, the consumption figures achieved during normal driving may differ from the test values, depending in particular on special equipment fitted, vehicle loading, personal driving style, road and traffic conditions, environmental factors and the condition of the car.

***RRP: Recommended Retail Price - Including VAT & CO₂ emissions tax. Recommended Retail Price which is not binding.**

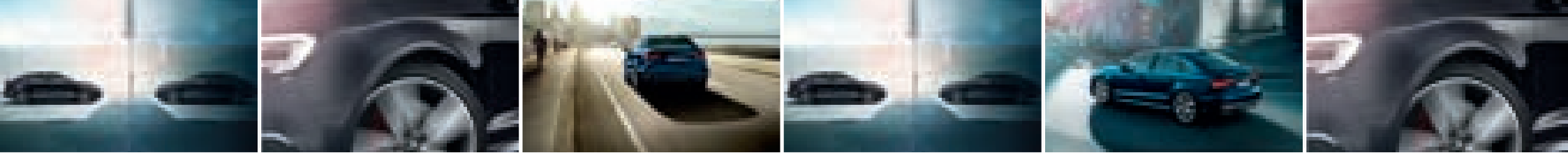


Standard Equipment for the A3 Sedan

- ▶ Front centre armrest
- ▶ Floor mats at front and rear
- ▶ Electronic stability control (ESC)
- ▶ Space-saving spare wheel 16"
- ▶ servotronic
- ▶ Anti-theft wheel bolts
- ▶ Car jack
- ▶ First aid kit with warning triangle
- ▶ Leather-covered multifunction sports steering wheel, 3-spoke design
- ▶ Standard chassis
- ▶ ISOFIX child seat mounting and Top Tether anchorage point for outer rear seats
- ▶ ISOFIX child seat mounting for passenger seat
- ▶ Front seats height adjustable
- ▶ Folding rear seat back
- ▶ Three rear head restraints
- ▶ Acoustic windscreen
- ▶ Power-operated child safety lock
- ▶ Central locking with remote control key
- ▶ Heat-insulating glass
- ▶ Dipping interior mirror
- ▶ Driver and front passenger airbag with knee airbag and front passenger airbag deactivation
- ▶ Side airbags at front and head airbag system
- ▶ Trim strips, black
- ▶ Luggage compartment lining
- ▶ Roof spoiler
- ▶ Inlays in Micrometallic silver
- ▶ Front head restraints
- ▶ Exterior mirror housings painted in body colour
- ▶ Headlining, cloth
- ▶ Luggage compartment mat
- ▶ Exterior mirrors with integrated LED indicators
- ▶ Speed limiter
- ▶ Anti-theft alarm
- ▶ Start/stop system
- ▶ Xenon plus headlights
- ▶ Separate daytime running lights
- ▶ Rear window wiper and washer system with intermittent control
- ▶ Light / rain sensor
- ▶ Automatic headlight range adjustment static
- ▶ 8 speakers
- ▶ Cruise control
- ▶ Rear fog lights
- ▶ All-weather lights
- ▶ Dual-tone horn
- ▶ Non-smoker's package
- ▶ Seatbelt monitoring
- ▶ Driver information system
- ▶ Additional warning lights (door area)
- ▶ Bluetooth interface
- ▶ MMI radio plus
- ▶ Manual airconditioning system
- ▶ Index cloth upholstery
- ▶ Standard seats at front
- ▶ Interior lighting package
- ▶ USB and Aux IN Jack
- ▶ Auto-release function
- ▶ Auxiliary air heater (2.0TDI only)
- ▶ Electronic stabilisation Programme (ESP) - (2.0 litre engines only)
- ▶ 16" cast aluminium alloy wheels

Standard Equipment for the S3 Sedan

- ▶ Aluminium look in interior
- ▶ Audi drive select
- ▶ Audi sound system
- ▶ Automatic air recirculation
- ▶ Automatic headlight range adjustment dynamic (self-adjusting while driving)
- ▶ Cast aluminium alloy wheels, 5-twin-spoke star design (S design), size 7.5J x 18, with 225/40 R 18 tyres
- ▶ Cornering and all-weather light
- ▶ Deluxe automatic air conditioning
- ▶ Door sill trims with aluminium inlay
- ▶ Driver information system with colour display
- ▶ Exterior mirror housings in aluminium look
- ▶ Front seats with height adjustment and retractable thigh support
- ▶ Front sports seats
- ▶ Headlight washers
- ▶ High-gloss package
- ▶ Indirect tyre pressure monitoring system
- ▶ Inlays, matt brushed aluminium
- ▶ Interior mirror with automatic anti-glare action
- ▶ Leather-covered multi-function sports steering wheel, 3-spoke, flat-bottomed, with shift paddles
- ▶ Leather/fabric seat trim covers
- ▶ LED headlights incl. dynamic turn signals at rear
- ▶ LED rear lights with dynamic indicator
- ▶ Pedals and footrest in stainless steel
- ▶ Progressive steering
- ▶ quattro
- ▶ S line roof spoiler
- ▶ Space-saving spare wheel 18"
- ▶ Sports suspension
- ▶ Storage compartment and luggage compartment package



Optional Equipment

Code:	Item:	1.0 T FSI 85kW Manual	1.0 T FSI 85kW S tronic	1.4T FSI 110kW Manual	1.4T FSI 110kW S tronic	2.0T FSI 140kW Manual	2.0T FSI 140kW S tronic	2.0 TDI 105 kW S tronic	S3 S tronic quattro	Price R
Wheels and Tyres										
CJ2	Audi exclusive cast aluminium alloy wheels, 10-spoke design, titanium look, size 8J x 18, with 225/40 R18 tyres	●	●	●	●	●	●	●	-	20 500
C7M	Audi exclusive cast aluminium alloy wheels, 5-V-spoke design, titanium look, size 8J x 19, with 235/35 R19 tyres	-	●	●	●	●	-	●	-	27 000 13 500
C7D	Audi Sport cast alum. alloy wheels, 5-arm wing design, gloss titanium look, size 8J x 19, with 235/35 R19 tyres	-	●	●	●	●	-	●	-	27 000 13 500
40Y	Audi Sport cast aluminium alloy wheels in 5-arm pylon design, matt titanium look, mach.-pol., 8J x 18, 225/40 R18 tyres	●	●	●	●	●	●	●	-	20 500 No Cost
41V	Audi Sport cast aluminium alloy wheels, 10-V-spoke design, size 8J x 18, with 225/40 R18 tyres	●	●	●	●	●	●	●	-	20 500
C1Q	Audi Sport cast aluminium alloy wheels, 5-arm dynamic design, partly pol., size 8J x 18, with 225/40 R18 tyres	●	●	●	●	●	●	●	-	20 500
C2R	Audi Sport cast aluminium alloy wheels, 5-twin-spoke design, contrasting grey, partly pol., 8J x 18, 225/40 R18 tyres	●	●	●	●	●	●	●	-	20 500
CB7	Cast aluminium alloy wheels, 15-spoke Y design, size 7J x 16, 205/55 R 16 tyres	●	●	●	●	●	●	●	-	No Cost
V53	Cast aluminium alloy wheels, 5-arm aero design, contrast. grey, partly pol., 7.5J x 17, with 225/45 R17 tyres	●	●	●	●	●	●	●	-	12 000
COX	Cast aluminium alloy wheels, 5-spoke star design, size 7.5J x 17, with R 17 tyres	●	●	●	●	●	●	●	-	12 000
CS9	Cast aluminium alloy wheels in 5-twin-spoke star design, contrast grey, partly pol., size 8JX 19, with 235/35 R19 tyres	●	●	●	●	●	●	●	-	12 000
C6H	Cast aluminium alloy wheels, 5-twin-spoke star design, size 7.5J x 17, with R 17 tyres	-	-	-	-	-	-	-	●	13 500
7K9	Indirect tyre pressure monitoring system	●	●	●	●	●	●	●	S	960
41I	Audi Sport cast alum. alloy wheels, 5-arm turbine design, magn. look, mach-. pol., 8J x 18, w. 225/40 R18 tyres	-	-	-	-	-	-	-	●	No Cost
2H6	Audi drive select	●	●	●	●	●	●	●	S	3 050
2UG	S line sports suspension	●	●	●	●	●	●	●	●	12 300
2UC	Sports suspension	●	●	●	●	●	●	●	S	3 050
2UF	Rough ride suspension	●	●	●	●	●	●	●	●	5 300
2H7	Audi magnetic ride	-	-	-	-	-	-	-	●	13 640
PC2	Brake callipers in red	-	-	-	-	-	-	-	●	4 180



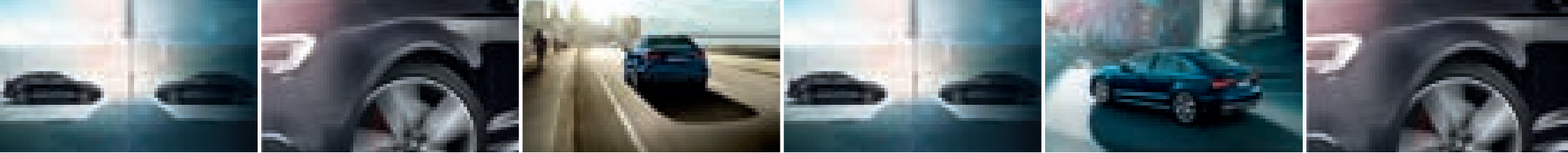
Optional Equipment

Code:	Item:	1.0 T FSI 85kW Manual	1.0 T FSI 85kW S tronic	1.4T FSI 110kW Manual	1.4T FSI 110kW S tronic	2.0T FSI 140kW Manual	2.0T FSI 140kW S tronic	2.0 TDI 105 kW S tronic	S3 S tronic quattro	Price R
Audio and Communication										
9S8	Audi virtual cockpit	●	●	●	●	●	●	●	●	7 250
9S6	Driver information system with colour display	●	●	●	●	●	●	●	S	2 080
PNU	MMI navigation	●	●	●	●	●	●	●	●	15 000
PNQ	MMI navigation plus with MMI touch	●	●	●	●	●	●	●	●	24 000
PNE	MMI navigation plus with MMI touch (excl Audi Connect)	●	●	●	●	●	●	●	●	20 000
UE7	Audi Music Interface	●	●	●	●	●	●	●	-	2 930
UI2	Audi smartphone interface	●	●	●	●	●	●	●	●	4 870
9VD	Audi sound system	●	●	●	●	●	●	●	S	3 560
9VS	Bang & Olufsen Sound System	●	●	●	●	●	●	●	●	9 200
9ZV	Comfort telephony, without antenna connection	●	●	●	●	●	●	●	-	2 100
Seats										
7P1	4-way lumbar support for the front seats	●	●	●	●	●	●	●	●	2 930
PS1	Front sports seats	●	●	●	●	●	●	●	S	5 500
8I1	Lumbar support with massage function for the driver seat	●	●	●	●	●	●	●	-	5 000
3NT	Rear seat bench unsplit, backrest split folding (three pieces) with center armrest	●	●	●	●	●	●	●	●	3 500
4A3	Seat heating for front seats	●	●	●	●	●	●	●	●	4 500
3L5	Front seats, electrically adjustable	-	-	-	-	-	-	-	●	11 200
PS6	S sports seats at front	-	-	-	-	-	-	-	●	9 000
Upholstery										
N7U	Alcantara/leather combination	●	●	●	●	●	●	●	-	12 000
7HE	Interior elements in artificial leather	●	●	●	●	●	●	●	●	4 000
N5W	Milano leather trim	●	●	●	●	●	●	●	-	17 500
N6L	Fine Nappa leather	-	-	-	-	-	-	-	●	18 700
N5X	Frequency Alcantara/leather combination	-	-	-	-	-	-	-	●	10 750
Interior										
9AK	Deluxe automatic airconditioning	●	●	●	●	●	●	●	S	8 000
QE1	Storage compartment and luggage compartment package	●	●	●	●	●	●	●	S	2 520
QJ1	Aluminium look in interior	●	●	●	●	●	●	●	S	980
9JH	Mobile phone / key holder, ashtray at front and cigarette lighter	●	●	●	●	●	●	●	●	760



Optional Equipment

Code:	Item:	1.0 T FSI 85kW Manual	1.0 T FSI 85kW S tronic	1.4T FSI 110kW Manual	1.4T FSI 110kW S tronic	2.0T FSI 140kW Manual	2.0T FSI 140kW S tronic	2.0 TDI 105 kW S tronic	S3 S tronic quattro	Price R
Steering Wheels										
1XX	Leather-covered multi-function sports steering wheel, 3-spoke, with shift paddles	-	●	-	●	-	●	●	-	6 550
2PF	Leather-covered multi-function sports steering wheel, 3-spoke, flat-bottomed	-	-	-	-	-	-	-	●	1 640
2ZW	Leather-wrapped multi-function steering wheel, heated	-	-	-	-	-	-	-	●	2 380
6Q5	Gear lever knob in aluminium, Audi exclusive	●	-	●	-	●	-	-	-	2 380
Exterior										
8X1	Headlight washers	●	●	●	●	●	●	●	S	3 560
8G1	High-beam control	●	●	●	●	●	●	●	●	1 880
PX2	LED headlights	●	●	●	●	●	●	●	S	14 450
6XK	Ext. mirrors, elect. adjust., heated, fold., autom. dim on driver side incl. aut. kerb-side func. f. pass. ext. mirr.	●	●	●	●	●	●	●	●	5 620
6XD	Exterior mirrors, electrically adjustable and heated	●	●	●	●	●	●	●	●	1 740
6FA	Exterior mirror housings painted in body colour	-	-	-	-	-	-	-	●	No Cost
PU7	Interior mirror with automatic anti-glare action	●	●	●	●	●	●	●	S	1 450
3FB	Panoramic glass roof	●	●	●	●	●	●	●	●	11 100
1M5	Provision for towing bracket	●	●	●	●	●	●	●	-	2 240
1M6	Trailer hitch mechanically swiveling and power-detachable	●	●	●	●	●	●	●	-	8 500
2Z0	Without model and technology designation	●	●	●	●	●	●	●	-	No Cost
5J2	S line roof spoiler	●	●	●	●	●	●	●	S	3 560
Safety and Security										
PG3	Convenience key in conjunction with anti-theft alarm	●	●	●	●	●	●	●	●	8 400
PCG	Adaptive cruise control (Stop&Go) including pre-sense front	●	●	●	●	●	●	●	●	15 300
7W1	Audi pre-sense basic	●	●	●	●	●	●	●	●	2 910
6K2	Audi pre-sense front with pedestrian detection	●	●	●	●	●	●	●	-	4 750
7Y1	Audi side-assist incl. cross traffic assist	●	●	●	●	●	●	●	●	7 370
7X5	Park assist	●	●	●	●	●	●	●	●	6 500
7X2	Parking system plus with selective display	●	●	●	●	●	●	●	●	8 500
7X1	Rear parking aid	●	●	●	●	●	●	●	●	5 400
KA2	Rearview camera	●	●	●	●	●	●	●	●	6 430
4X4	Rear side airbags	●	●	●	●	●	●	●	●	4 880
3B7	ISOFIX child seat mounting and Top Tether anchorage point for outer rear seats	●	●	●	●	●	●	●	●	No Cost



Optional Equipment

Code:	Item:	1.0 TFSI 85kW Manual	1.0 TFSI 85kW S tronic	1.4T FSI 110kW Manual	1.4T FSI 110kW S tronic	2.0T FSI 140kW Manual	2.0T FSI 140kW S tronic	2.0 TDI 105 kW S tronic	S3 S tronic quattro	Price R
Safety and Security: Continued										
ER2	Radio code	●	●	●	●	●	●	●	●	No Cost
Packages										
4ZD	Audi exclusive titanium black styling package	●	●	●	●	●	●	●	●	6 980
4ZB	High-gloss package	●	●	●	●	●	●	●	S	2 660
PQD	S line exterior package	●	●	●	●	●	●	●	-	20 000
PER	Audi design selection express red	-	-	-	-	-	-	-	●	18 800

Colour Availability

Colour Code:	Colours:	1.0 TFSI 85kW Manual	1.0 TFSI 85kW S tronic	1.4T FSI 110kW Manual	1.4T FSI 110kW S tronic	2.0T FSI 140kW Manual	2.0T FSI 140kW S tronic	2.0 TDI 105 kW S tronic	S3 S tronic quattro	Price R
T9T9	Ibis White	●	●	●	●	●	●	●	●	No cost
L1L1	Vegas Yellow	●	●	●	●	●	●	●	●	2 430
A2A2	Brilliant Black	●	●	●	●	●	●	●	●	No cost
M5M5	Beluga Brown*	●	●	●	●	●	●	●	●	2 430
B9B9	Cosmos Blue*	●	●	●	●	●	●	●	-	2 430
Y1Y1	Tango Red*	●	●	●	●	●	●	●	-	2 430
L5L5	Florett Silver*	●	●	●	●	●	●	●	●	2 430
2Y2Y	Glacier White*	●	●	●	●	●	●	●	●	2 430
0C0C	Monsoon Grey*	●	●	●	●	●	●	●	●	2 430
G3G3	Nano Grey*	●	●	●	●	●	●	●	●	2 430
OE0E	Mythos Black**	●	●	●	●	●	●	●	●	2 430
K6K6	Ara Blue***	-	-	-	-	-	-	-	●	13 900
6Y6Y	Daytona Grey***	-	-	-	-	-	-	-	●	25 000
Q0Q0	Audi exclusive paint	●	●	●	●	●	●	●	●	34 020

Options are subject to availability and extended delivery.

- = Not available ● = Available S = Standard * = Metallic *** = Pearl Effect **** = Crystal Effect

Non-standard exterior colours available at a premium.



**All drivers deserve trouble-free motoring.
If you drive an Audi, we make sure you get it.**

When you buy an Audi, we include a number of benefits and services. There's an automatic warranty for all new Audis. There's also Audi A-Plus, a range of quality products that meet the exacting needs of the new Audi vehicle customer, and the Audi Driving Experience which offers a range of driving courses to suit your needs. For more information, contact our Customer Interaction Centre on 0860 434 838.

Audi Financial Services

The first step towards the thrill of driving an Audi is buying one. Audi Financial Services can help to make that happen. We offer a range of convenient ways to buy and insure your car, making your purchase and ownership experience as pleasurable and straightforward as you would wish. Conveniently situated on every Audi dealer's floor, our Finance & Insurance Business Managers will assist you through every aspect of your vehicle purchase. So, whether you're starting your journey with the affordable Audi A1 or setting your sights on the innovative and intuitive Audi A8, we'll find a simple yet effective finance solution for you that meets your requirements and suits your lifestyle. For more information regarding Audi Financial Services, please contact 0861 112 828.

Audi Freeway Plan

A complete maintenance and service plan covering all maintenance and repairs except for top-up fluids, fuel, accident damage, glass and tyres. A 100 000 km or 5-year Freeway Plan is included as standard on all new Audis. Top-up options to extend maintenance up to 200 000 km or five years are available at extremely competitive rates. For more information regarding the Audi Freeway Plan, please contact 0860 434 838.

Audi Assist

A standard 5-year roadside and emergency assistance programme ensures that you are never left in the lurch. With Audi Assist, you will be prepared for the unexpected. Audi Assist is a 24-hour service and can be contacted on 0860 434 838..

AudiSure

With AudiSure we have designed a range of precision products for your motoring and finance needs. AudiSure has a range of comprehensive and affordable insurances, offering comprehensive motor insurance as well as insurance for your finance agreement. Our unique suite of products is designed to give you peace of mind and value for money, ensuring that every stage of your motoring life with Audi is covered and hassle free. The AudiSure motor vehicle and personal lines policy is suitable for anyone purchasing a new or pre-owned Audi and is conveniently available from any Audi Dealer in South Africa. For more information about AudiSure you can contact the Finance and Insurance Business Manager at your local Audi Dealer, visit audi.co.za, or get in touch with our contact centre by calling 0800 204 639.

New Vehicle Warranty

A comprehensive 1-year, unlimited distance warranty included as standard on all new Audis. A 12-year anti-corrosion guarantee.

A3

Audi A3 and S3 Sedan

Prices and specifications are subject to change without prior notice. E&OE.
For further information visit our website or contact your nearest Audi dealer.